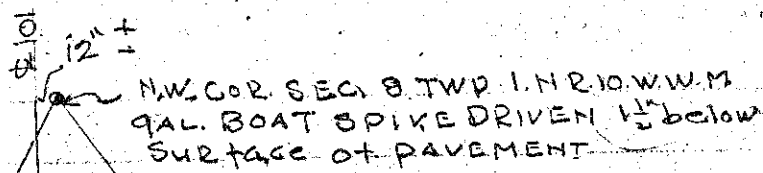


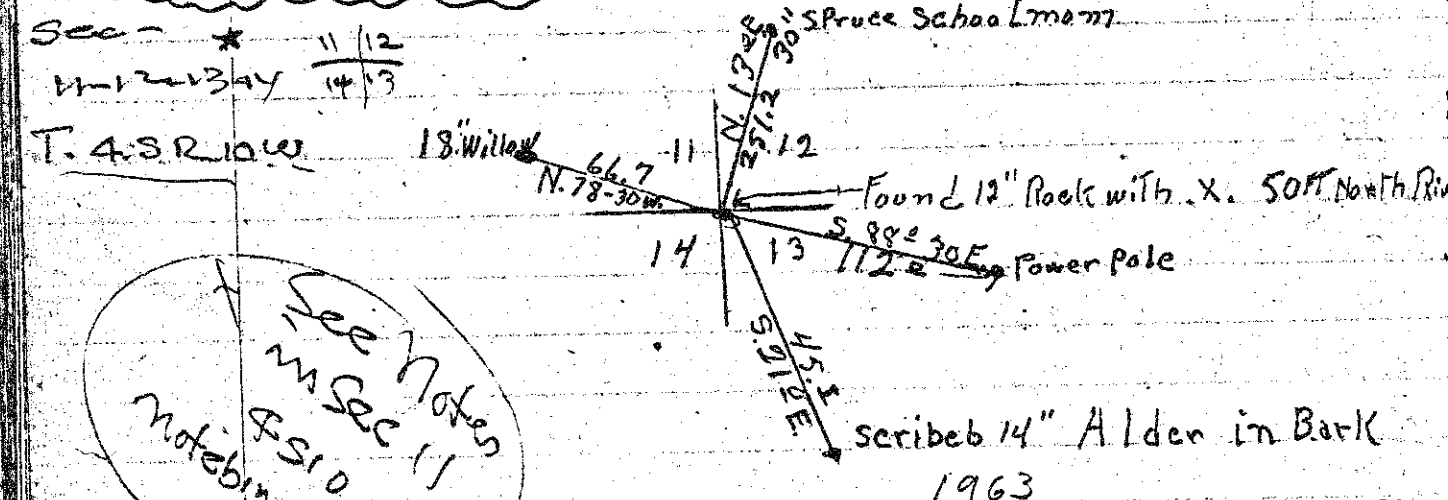
N.W. COR SEC  
S.T. 11. R  
10. W. 10. W



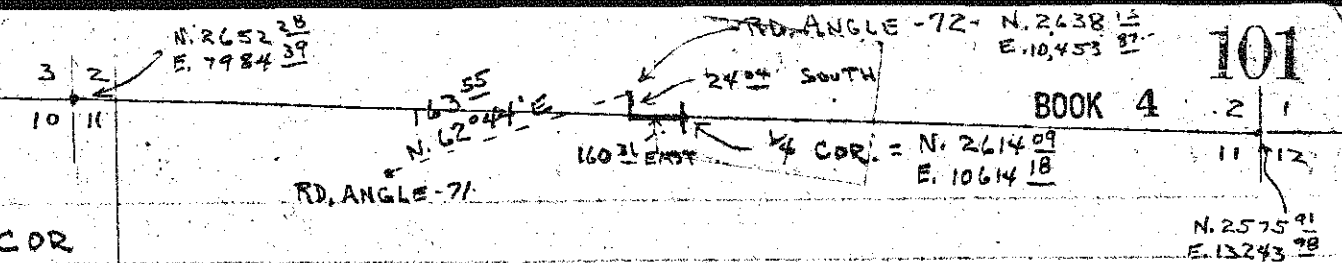
Lead plug in N.W. Parapet  
In present of W.E. Anderson, F.L. Smith, Gail Arthur.  
Dec. 1962.

1/2 Cor between found old B.T. 30' Rotted Spruce. Marks visible - N. 65° 45' W. 33.80  
E. 19-20-T. 2 30' old Hemlock. Marks visible. N. 114° E. 22.46 ft

S.R. 10. W. 10. W  
July 1962  
New B.T. 16" Spruce. N. 79° W. 25.00 ft  
" B.T. 12" Hem. S. 120° E. 8.5 ft  
In presents W.E. Anderson, F.L. Smith, Gail Arthur  
July 1962.



Sec. 13+14  
23-24  
TWP 3. N. R. 10. W. W. M.  
Found 4x4 Spruce Limb set in 1911 by Jackson Rotted off at Base, but dug out the sharp end point and redrove into ground again. Drive 2" I.P. 2" West of Cor. Made New B.T. 4" Spruce bears N. 3° E. 20.20 ft 10" Alder 360 E 27.25 in Bark 10" Alder " S. 39° 00 W 14.70 ft in Bark 8" Alder N. 37° 30 W 28.0 ft  
In Bark in presents W.E. Anderson, F.L. Smith & Gail Arthur.  
March 4, 1963.



DURING 1964 - WITH A PARTY TOTALING THREE MEN MADE SURVEY OF IRISH ROAD, (ANGLES 71 + 72 OF SURVEY ARE SHOWN ABOVE). AFTER A TWO (2) DAY SEARCH FOR THE 1/4 COR. TO SEC. 2 + 11 - S.S. 10, IT WAS DECIDED THAT ALL EVIDENCE OF ORIGINAL COR SET 1882 WAS DESTROYED BY LOGGING, SO WITH COORDINATES OF BOTH EAST + WEST SEC. COR. TO SEC. 2 + 11 WE SET THE 1/4 COR. BY SETTING ON ANGLE 72, TURNED FROM ANGLE 71 - ANGLE OF 62° 44' AND SET HUB. SOUTH 24° 04', THENCE TURNED 90° 00' TO SET 1/4 COR. TO EAST AT DISTANCE OF 160.31 AS ABOVE INDICATED.  
1/4 COR. IS 2" STEEL TUBE W/ CEDAR PLUG, W/ COPPER POINT.  
B.T. ARE AS FOLLOWS

- 6" ALDER N. 10° W. 47' BARK SCRIBED (C.S. S. 2. B.T.)
  - 4" ALDER S. 2° E. 55' BARK SCRIBED (C.S. S. 11. B.T.)
  - 2" HEMLOCK S. 38° 30 W. 11' SMALL BLAZE TOO SMALL NOW TO SCRIBE
  - 2" SPRUCE N. 86° W. 23' SMALL BLAZE TOO SMALL NOW TO SCRIBE
- NAT. HAVING ANY TAGS WE HUNG A 3" - ALUMINUM WIRE RING ON LIMB JUST ABOVE SCRIBE OR BLAZE OF EACH OF FOUR (4) TREES W/ RED PLASTIC FLAGGING. IN PRESENTS OF - FRANCIS L. SMITH - GALE ARTHUR - JAN. 25, 1965

ORIGINAL 1/4 COR. BOUND BY STRIP FORESTRY

